

MA-ANT-C1-A

MG Cellular Dipole Antenna



Overview

The dipole antennas (MA-ANT-C1-A) are included with the MG21E. When in use the dipoles have a spherical coverage in comparison to a patch antenna. The dipole antennas will excel at allowing users to place the MG in areas where a directional patch antenna cannot be mounted. The dipoles are directly attached to the MG21E and require no additional mounting hardware.

MA-ANT-C1-A specifications

Electrical

Antenna type: Dipole

Frequency range:

Main antenna:

829 (698 - 960) MHz
 1940 (1710 - 2170) MHz
 2495 (2300 - 2690) MHz
 5500 (5150 - 5850) MHz

Auxiliary antenna:

829 (698 - 960) MHz
 1940 (1710 - 2170) MHz
 2495 (2300 - 2690) MHz
 5500 (5150 - 5850) MHz

Gain (per range):

Main antenna:

829 @ 2.6dBi
 1940 @ 4.2dBi
 2495 @ 3.0dBi
 5500 @ 3.5dB

Main antenna:

829 @ 3.5dBi
 1940 @ 2.7dBi
 2495 @ 4.9dBi
 5500 @ 2.9dBi

Polarization: Linear, vertical

Ordering Information

MA-ANT-C1-A

Regulatory

Certified for use with MG21E: MA-ANT-C1-A

Physical and Environmental:

Dimensions:

129mm x 19.5mm x 12.3mm

Material of radiator: PCB

Material of plastic: PC

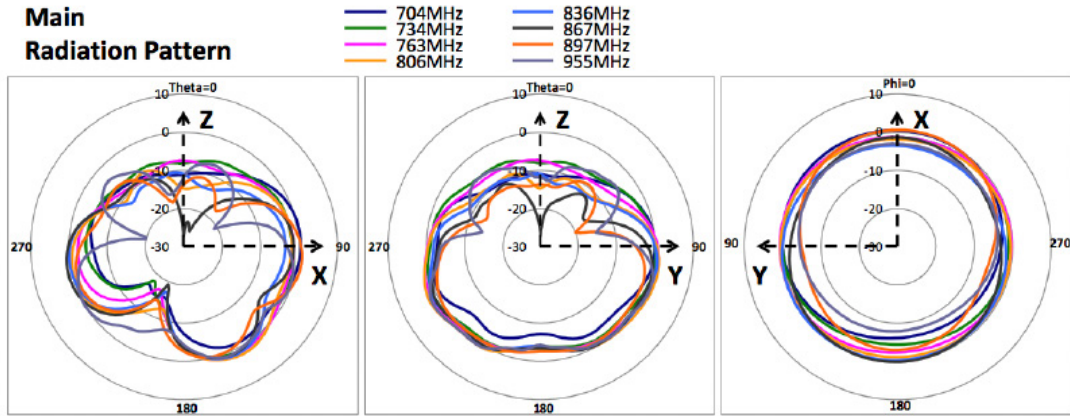
Operational temperature: -40°C to +65°C (-40°F to 149°F)

Storage temperature: -40°C to +80°C (-40°F to 176°F)

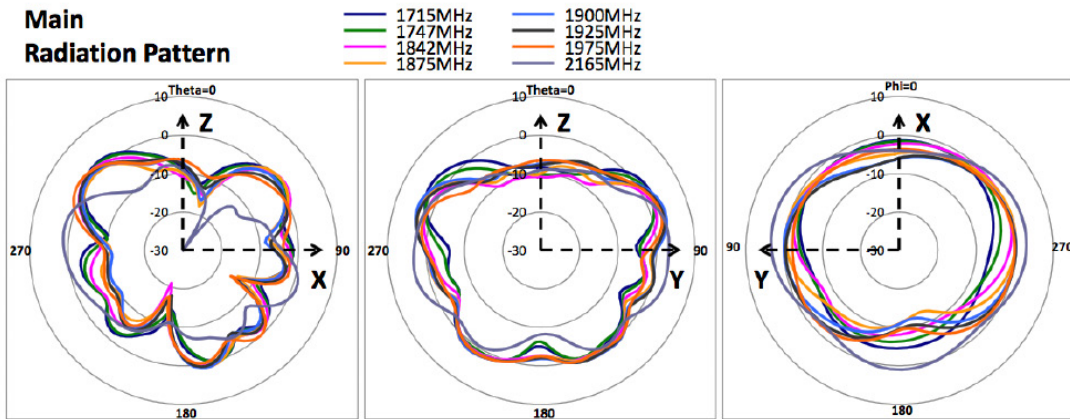
RP-SMA (female)

Radiation patterns

Main antenna - 829 (698 - 960) MHz

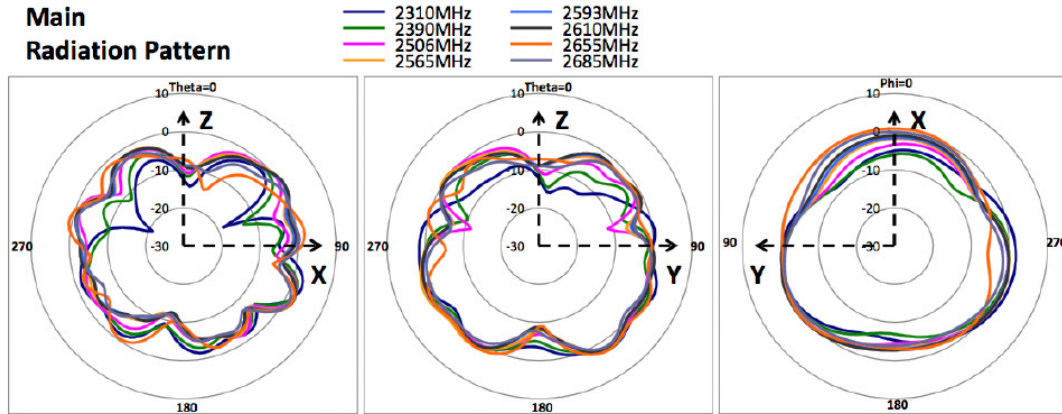


Main antenna - 1940 (1710 - 2170) MHz

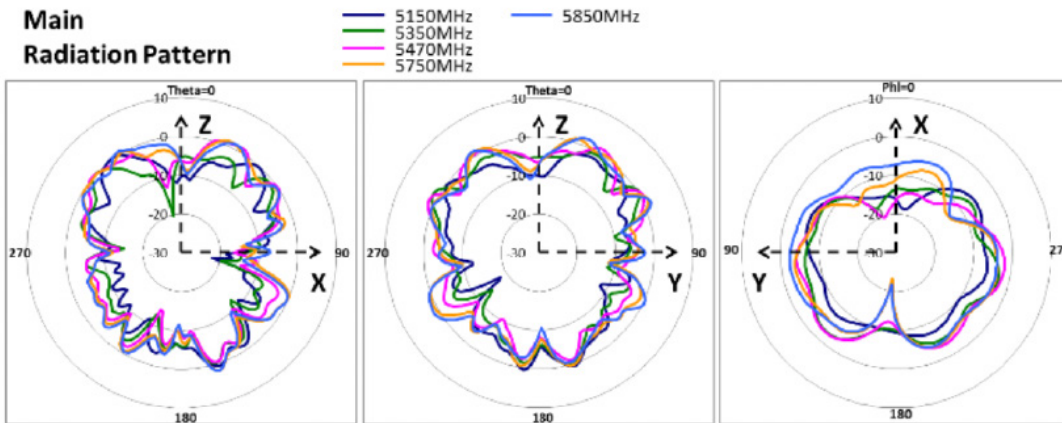


Radiation patterns

Main antenna - 2495 (2300 - 2690) MHz

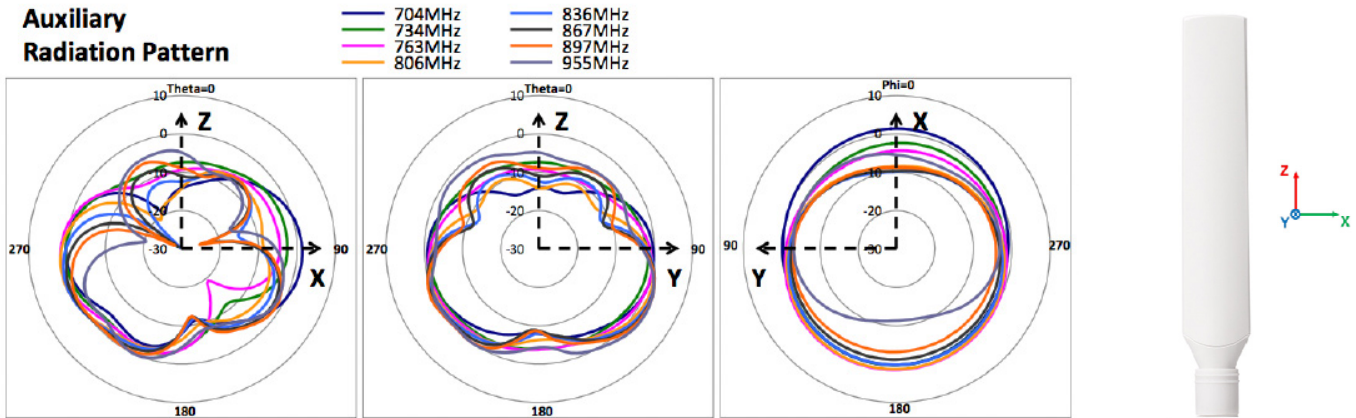


Main antenna - 5500 (5150 - 5850) MHz

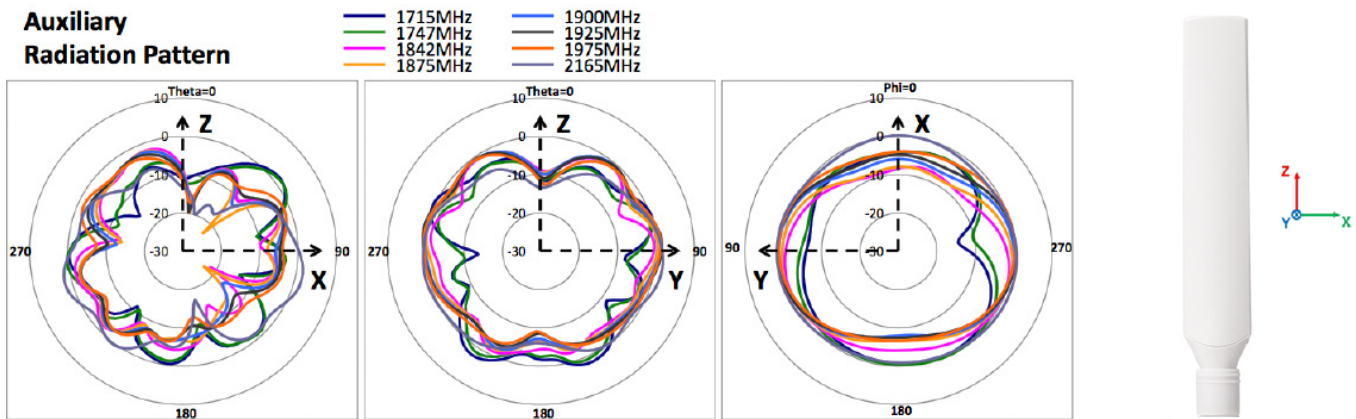


Radiation patterns

Auxiliary antenna - 829 (698 - 960) MHz

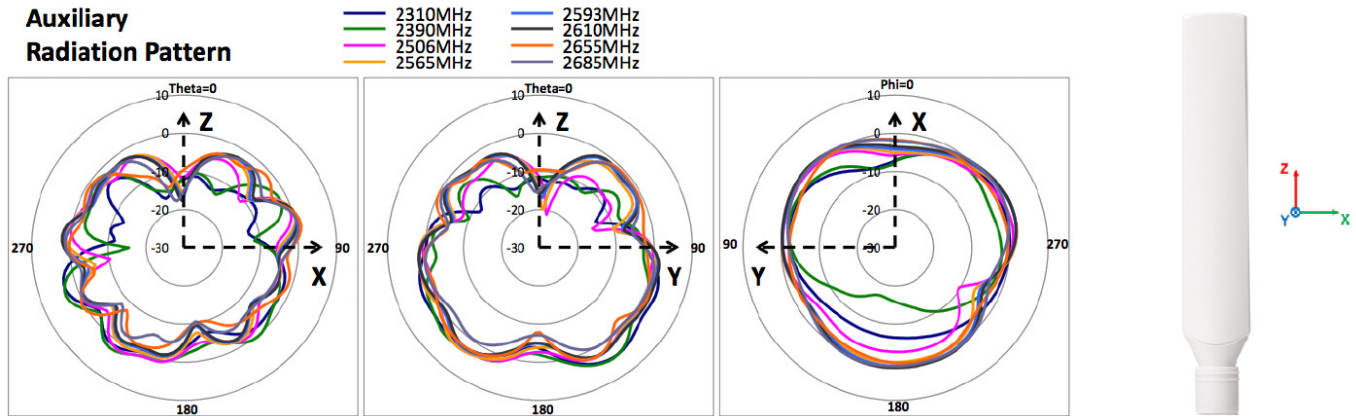


Auxiliary antenna - 1940 (1710 - 2170) MHz



Radiation patterns

Auxiliary antenna -2495 (2300 - 2690) MHz



Auxiliary antenna - 5500 (5150 - 5850) MHz

